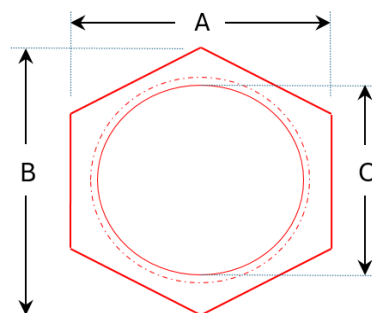




LNSS Series – 316 Stainless Steel Lock Nuts

Product Details:

- Material - 316 Grade Stainless Steel
- Characteristics - Threaded internal metric thread
- Applications - Suitable for use with all stainless steel liquid tight conduit fittings with a metric conduit thread
 - Ideal for securing a male threaded liquid tight fitting to a cable way, bulkhead or junction box
 - Designed for use in harsh environments



Product Catalogue No.	Nominal Conduit Size (mm)	Internal Thread size (C) (mm)	Width (A) (mm)	Height (B) (mm)	Thickness (mm)	Maximum torque (Nm)
LNSS-16	16	M16 x 1.5	21.0	23.0	4.0	20.0
LNSS-20	20	M20 x 1.5	25.0	28.0	4.0	25.0
LNSS-25	25	M25 x 1.5	30.0	32.5	4.5	30.0
LNSS-32	32	M32 x 1.5	40.5	45.5	5.0	35.0
LNSS-40	40	M40 x 1.5	50.5	55.5	5.0	35.0
LNSS-50	50	M50 x 1.5	61.5	67.5	6.0	40.0
LNSS-63	63	M63 x 1.5	73.0	81.0	6.5	40.0

Note: Tolerance = + / - 5% for all dimensions