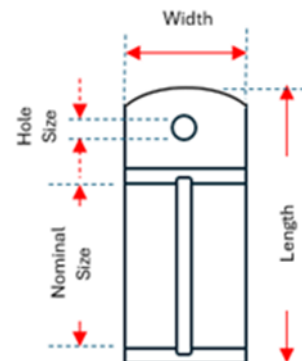


Half Saddles (Hot Dipped Galvanised)

- For the securing of electrical conduits (rigid and flexible) to solid surfaces in industrial and commercial environments

Product Details:

- Material - Hot dipped galvanised steel
- Standards - Manufactured to comply with AS/NZS 4680:2006
- Fixings - Accommodates 6.5mm nail in anchors
- Applications - For the securing of electrical conduits to solid surfaces



Product Catalogue No.	Nominal Size (mm)	Gauge (mm)	Hole Size (mm)	Length (mm)	Width (mm)	Height (mm)
LC-HS16HDG	16mm	1	6.5	46.0	19.0	18.0
LC-HS20HDG	20mm	1	6.5	50.0	19.0	22.0
LC-HS25HDG	25mm	1	6.5	60.0	25.0	26.0
LC-HS32HDG	32mm	1	6.5	67.0	24.0	33.0
LC-HS40HDG	40mm	1	6.5	74.0	32.0	41.0
LC-HS50HDG	50mm	2	6.5	85.0	39.0	54.0