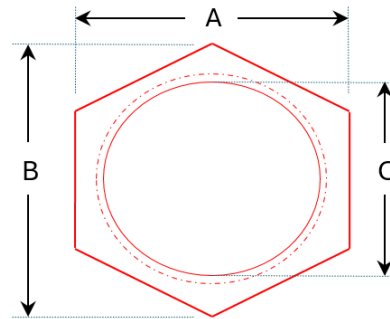


Nickel Plated Brass EMC Lock Nuts

Product Details:

- Material - Nickel Plated Brass
- Characteristics - Threaded internal metric thread
- Applications - Suitable for use with EMC metallic cable glands



Product Catalogue No.	Nominal Conduit Size (mm)	Internal Thread size (C) (mm)	Width (A) (mm)	Height (B) (mm)	Nominal Thickness Includes Barb (mm)	Nominal Thickness Excludes Barb (mm)
LNEMC-20	20	M20 x 1.5	22.0	30.0	4.0	3.0
LNEMC-25	25	M25 x 1.5	30.0	33.0	4.0	3.0
LNEMC-32	32	M32 x 1.5	40.5	45.5	4.0	3.0
LNEMC-40	40	M40 x 1.5	43.0	47.0	5.0	4.0
LNEMC-50	50	M50 x 1.5	55.0	55.0	5.5	4.5
LNEMC-63	63	M63 x 1.5	68.0	73.0	6.0	5.0

Note: Tolerance = + / - 5% for all dimensions