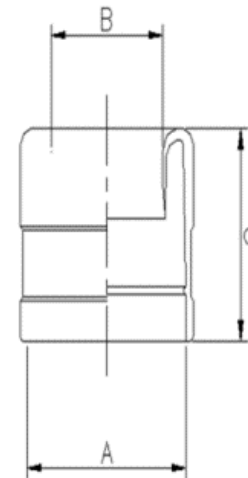


# CLEC - Nylon Conduit End Cap

- Moulded nylon end cap to snap onto CL Nylon conduit end and prevent cable chaffing at cut end of conduit
- Designed for terminating CL conduit range

## Product Details:

Temperature range	-	-50°C to + 135°C
Material	-	PA66 Nylon
Colour	-	Black (RAL 9005)
Protection degree	-	IP66
U.V. Rating	-	U.V. and sunlight resistant
Characteristics	-	Highly resistant to solvents and oils - Halogen free - Free of Phosphor and cadmium - Designed for terminating CL conduit range
Installation	-	No tools required



Product Catalogue No.	Nominal Conduit Size (mm)	Nominal Dimensions (A) (mm)	Nominal Dimensions (B) (mm)	Nominal Dimensions (C) (mm)	Weight (Grams)
CLEC16	16	16	10.5	19	2
CLEC21	21	21	15.0	19	2
CLEC28	28	28	20.3	22	4
CLEC34	34	34	25.8	23	5
CLEC42	42	42	32.0	24	6
CLEC54	54	54	43.7	25	7